



Stanislaus County Sheriff's Department Crime Analysis Unit

Introducing: Stanislaus County Sheriff's Department "Public Crime Map"

Stanislaus County Sheriff's Department: Public Crime Map is an interactive mapping application, which serves a tool for the public to understand the magnitude and trend of crimes occurring in the department jurisdiction for **the last 180 days from 30 days prior to today**.

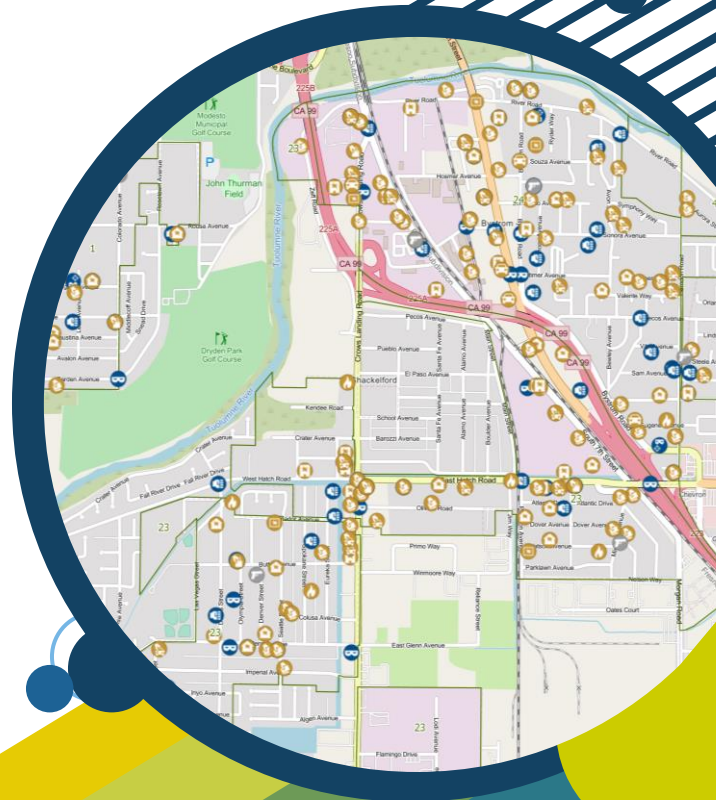
Map Usage Disclaimer

Data and information on this application are for informational/preliminary regional research purposes and may not have been prepared for or be suitable for legal, commercial or administrative purposes without additional reviews by the department. The department makes no warranty as to the accuracy of the data nor assumes any liability for its use.

Data Summary

This interactive application is designed to provide the public with as much valid and reliable information on UCR Part 1 crime and shooting incidents (except crime incidents whose victims or survivors request their confidentiality) occurred within the department jurisdiction. Data cover the last 180 days from 30 days prior to today. Incident locations are deliberately offset to the nearest and intersection node to protect the privacy of parties involved in the incident.

Click [here](#) to direct you to the webpage.

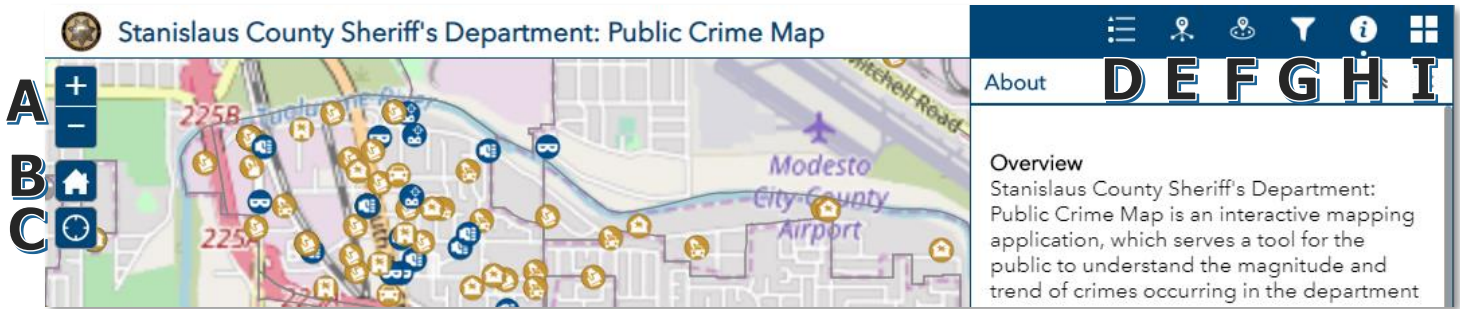


General Inquiries, please email: news@stansheriff.com or (209) 567-4401
For Stanislaus County GIS Technical Support, please email
HelpDesk@stancounty.com or call (209) 525-4357

Stanislaus County Sheriff's Department Mapping Application Quick Start Guide

Administered by **Stanislaus County Sheriff's Department – Crime Analysis Unit**
 Collaborated with **Stanislaus County IT Central – GIS**
 Powered by **ESRI**

Explore the different possibilities by learning how to navigate the mapping interface!



Window Header Top Row Navigation

- A. **ZOOM** Click to zoom & scroll in or out.
- B. **HOME EXTENT** Click on this icon to reset your map back to view the entire County.
- C. **MY LOCATION** allows the site to assist you further based on your current location.

- D. **LEGEND** Provides the symbology of what each symbol means.
- E. **SUMMARY STATISTICS** Displays counts per each crime classification. Results are interactively changing as the map extent is changing or as the data are filtered.
- F. **NEAR ME** Allows users to query information geographically. Enter your address or address of your interest and set a search radius (ft).

- G. **FILTER** Allows users to search for calls for service by city, hour of day and/or day of week OR limit information by date range or by call type. Make sure the ellipse shape on the right top corner to be green.



- H. **INFORMATION** Get informed of the basic of the mapping application.
- I. **BASEMAP GALLERY** Switch between various basemap types or return to the default basemap at any time.

